

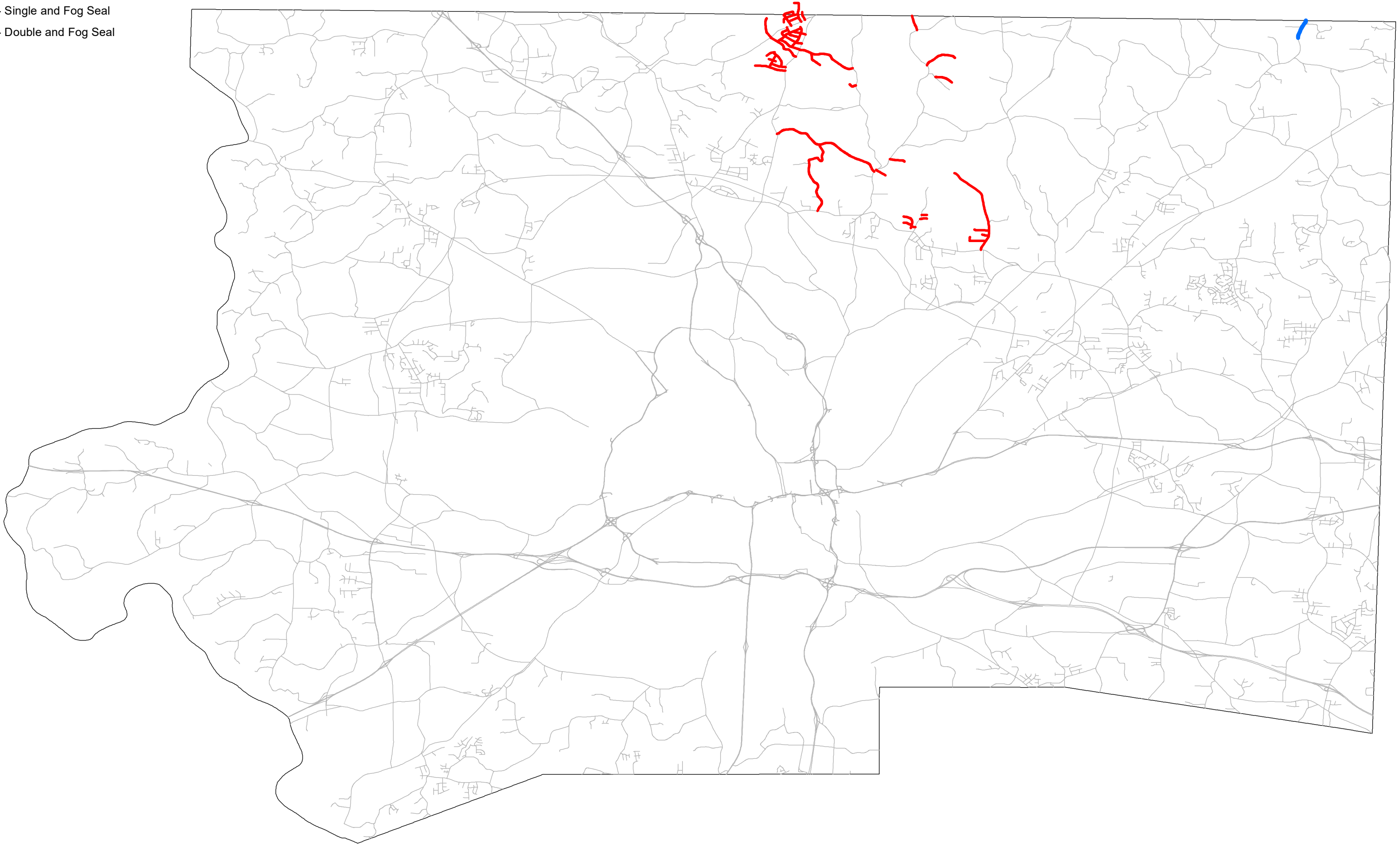
Map Number	Route	Begin MP	To MP	From	To	Length	Width	Treatment	Map SY	Gal Seal	Markings Present
1	SR 1912 - BANNERTOWN CHURCH ROAD	0.00	1.20	NC 8	EOM	1.20	20	Seal - Double and Fog Seal	14,033	7,017	Yes
2	SR 1913 - CAUDLE STREET	0.00	0.63	NC 8	SR 2107 MERCER STREET	0.63	20	Seal - Double and Fog Seal	7,333	3,667	No
3	SR 1914 - ANDES STREET	0.00	0.53	SR 2093 NORTH BERRY STREET	EOM	0.53	20	Seal - Double and Fog Seal	6,230	3,115	No
4	SR 1915 - DOWNING STREET	0.00	0.25	NC 8	SR 2057 DALE STREET	0.25	20	Seal - Double and Fog Seal	2,898	1,449	No
5	SR 1916 - MEMORY LANE	0.00	0.13	NC 65	STOKES CO	0.13	20	Seal - Double and Fog Seal	1,549	774	No
6	SR 1918 - TESH ROAD	0.00	1.20	SR 1917 RED BANK ROAD	NC 8	1.20	20	Seal - Double and Fog Seal	14,127	7,063	Yes
7	SR 1931 - PROVIDENCE CHURCH ROAD	0.00	2.03	NC 66	SR 1932 SHILOH CHURCH ROAD	2.03	20	Seal - Double and Fog Seal	23,807	11,903	Yes
8	SR 1932 - SHILOH CHURCH ROAD	0.00	2.35	NC 8	SR 2211 BAUX MOUNTAIN ROAD	2.35	20	Seal - Double and Fog Seal	27,585	13,793	Yes
9	SR 1935 - GREYMAR DRIVE	0.00	0.14	SR 1934 DAVIS ROAD	EOM	0.14	20	Seal - Double and Fog Seal	1,584	792	No
10	SR 1937 - WALKERTOWN COMMUNITY CENTER RD	0.00	0.32	SR 1938 CAMP BETTY HASTINGS ROAD	SR 2090 WALKERTOWN COMMUNITY CENTER RD	0.32	20	Seal - Double and Fog Seal	3,719	1,860	No
11	SR 1938 - CAMP BETTY HASTINGS ROAD	0.00	2.11	NC 66	EOM	2.11	20	Seal - Double and Fog Seal	24,769	12,385	Yes
12	SR 1942 - KIGER ROAD	0.00	0.36	SR 2211 BAUX MOUNTAIN ROAD	STOKES CO	0.36	20	Seal - Double and Fog Seal	4,177	2,089	Yes
13	SR 1944 - DUSTY TRAIL	0.00	0.67	SR 2211 BAUX MOUNTAIN ROAD	EOM	0.67	20	Seal - Double and Fog Seal	7,873	3,937	No
14	SR 2048 - PRIDDY ROAD	0.00	0.30	SR 2211 BAUX MOUNTAIN ROAD	EOM	0.30	20	Seal - Double and Fog Seal	3,508	1,754	No
15	SR 2057 - DALE STREET	0.00	0.56	SR 1914 ANDES STREET	SR 1912 BANNERTOWN CHURCH ROAD	0.56	20	Seal - Double and Fog Seal	6,606	3,303	No
16	SR 2058 - MERCER STREET	0.00	0.14	SR 1914 ANDES STREET	NC 65	0.14	20	Seal - Double and Fog Seal	1,690	845	No
17	SR 2059 - POGO ROAD	0.00	0.10	SR 1934 DAVIS ROAD	EOM	0.10	20	Seal - Double and Fog Seal	1,209	604	No
18	SR 2090 - WALKERTOWN COMMUNITY CENTER RD	0.00	0.09	SR 1937 WALKERTOWN COMMUNITY CENTER RD	EOM	0.09	20	Seal - Double and Fog Seal	1,033	516	No
19	SR 2093 - NORTH BERRY STREET	0.00	0.45	NC 8	SR 2057 DALE STREET	0.45	20	Seal - Double and Fog Seal	5,280	2,640	No
20	SR 2095 - EMORYWOOD ROAD	0.00	0.60	NC 8	SR 2097	0.60	20	Seal - Double and Fog Seal	7,052	3,526	No
21	SR 2096 - CHESAPEAKE DRIVE	0.00	0.30	NC 8	SR 2097 EL RANCHO DRIVE	0.30	20	Seal - Double and Fog Seal	3,473	1,737	No
22	SR 2097 - EL RANCHO DRIVE	0.00	0.32	SR 2096 CHESAPEAKE DRIVE	SR 2125 SPANISH OAK DRIVE	0.32	20	Seal - Double and Fog Seal	3,778	1,889	No
23	SR 2107 - MERCER STREET	0.00	0.23	SR 1914 ANDES STREET	SR 2057 DALE STREET	0.23	20	Seal - Double and Fog Seal	2,699	1,349	No
24	SR 2125 - SPANISH OAK DRIVE	0.00	0.39	SR 2096 CHESAPEAKE DRIVE	SR 4536 WHISPERING DRIVE	0.39	20	Seal - Double and Fog Seal	4,576	2,288	No
25	SR 2129 - SAURATOWN ROAD	0.00	0.18	NC 65	STOKES CO	0.18	20	Seal - Double and Fog Seal	2,135	1,068	No
26	SR 2135 - OLD SCHOOL HOUSE ROAD	0.00	0.15	SR 1917 RED BANK ROAD	EOM	0.15	20	Seal - Double and Fog Seal	1,772	886	No
27	SR 2144 - HINDENBURG LANE	0.00	0.22	SR 2129 SAURATOWN ROAD	SR 4404 DANUBE ROAD	0.22	20	Seal - Double and Fog Seal	2,558	1,279	No
28	SR 2197 - MAPLELEAF CT	0.00	0.08	SR 2097 EL RANCHO DR	EOM	0.08	20	Seal - Double and Fog Seal	962	481	No
29	SR 2198 - SCOTCHPINE CT	0.00	0.06	SR 2097 EL RANCHO DR	EOM	0.06	20	Seal - Double and Fog Seal	727	364	No
30	SR 2199 - HORTON ROAD	0.00	0.35	SR 1918 TESH ROAD	EOM	0.35	20	Seal - Double and Fog Seal	4,130	2,065	No
31	SR 4404 - DANUBE ROAD	0.00	0.29	NC 65	SR 4405 BLACKWOOD DRIVE	0.29	20	Seal - Double and Fog Seal	3,403	1,701	No
32	SR 4405 - BLACKWOOD DRIVE	0.00	0.03	SR 4404 DANUBE ROAD	Stokes Co	0.03	20	Seal - Double and Fog Seal	293	147	No
33	SR 4406 - BLACKWOOD DRIVE	0.00	0.01	SR 4404 DANUBE ROAD	SR 4407 RHINE ROAD	0.01	20	Seal - Double and Fog Seal	153	76	No
34	SR 4407 - RHINE ROAD	0.00	0.37	SR 2129 SAURATOWN ROAD	EOM	0.37	20	Seal - Double and Fog Seal	4,388	2,194	No
35	SR 4435 - REMINGTON RIDGE ROAD	0.00	0.08	SR 1934 DAVIS ROAD	SR 4436 REMINGTON POINT DRIVE	0.08	20	Seal - Double and Fog Seal	962	481	No
36	SR 4436 - REMINGTON POINT DRIVE	0.00	0.38	EOM	EOM	0.38	20	Seal - Double and Fog Seal	4,482	2,241	No
37	SR 4437 - REMINGTON POINT COURT	0.00	0.17	SR 4436 REMINGTON POINT DRIVE	EOM	0.17	20	Seal - Double and Fog Seal	1,959	980	No
38	SR 4444 - MISTY MOUNTAIN ROAD	0.00	0.36	SR 1945 MISTY MOUNTAIN COURT	EOM	0.36	20	Seal - Double and Fog Seal	4,247	2,124	No
39	SR 4453 - SHILOH CHURCH ROAD	0.00	0.22	SR 211 BAUX MOUNTAIN ROAD	EOM	0.22	20	Seal - Double and Fog Seal	2,581	1,291	No
40	SR 4505 - AMY LANE	0.00	0.13	SR 1938 CAMP BETTY HASTINGS ROAD	EOM	0.13	20	Seal - Double and Fog Seal	1,525	763	No
41	SR 4509 - SHELTON RIDGE	0.00	0.29	SR 1938 CAMP BETTY HASTINGS ROAD	EOM	0.29	20	Seal - Double and Fog Seal	3,344	1,672	No
42	SR 4536 - WHISPERING DRIVE	0.00	0.18	EOM	EOM	0.18	20	Seal - Double and Fog Seal	2,159	1,079	No
43	SR 1958 - Memory Ln - Stokes Co.	0.00	0.06	Forsyth Co. Line	EOM	0.06	20	Seal - Double and Fog Seal	751	375	No
44	SR 2053 - SAURATOWN ROAD - Stokes Co.	0.00	0.36	SR 2129 SAURATOWN ROAD	EOM	0.36	20	Seal - Double and Fog Seal	4,236	2,118	No
45	SR 2073 - BLACKWOOD DR - Stokes Co.	0.00	0.25	SR 4406 BLACKWOOD DR	SR 4405 BLACKWOOD DRIVE	0.25	20	Seal - Double and Fog Seal	2,910	1,455	No
46	SR 1958 - CRAIG RD	0.00	0.98	STOKES CO	MP 0.44	0.44	24	Seal - Single and Fog Seal	6,195	1,549	Yes

Totals	
Total Map Length	20.07 mi.
Seal - Double and Fog Seal	230,267 SY
Seal - Single and Fog Seal	6,195 SY

**Forsyth Co. AST Contract Map  
DI00236**

**Treatment**

- Seal - Single and Fog Seal
- Seal - Double and Fog Seal

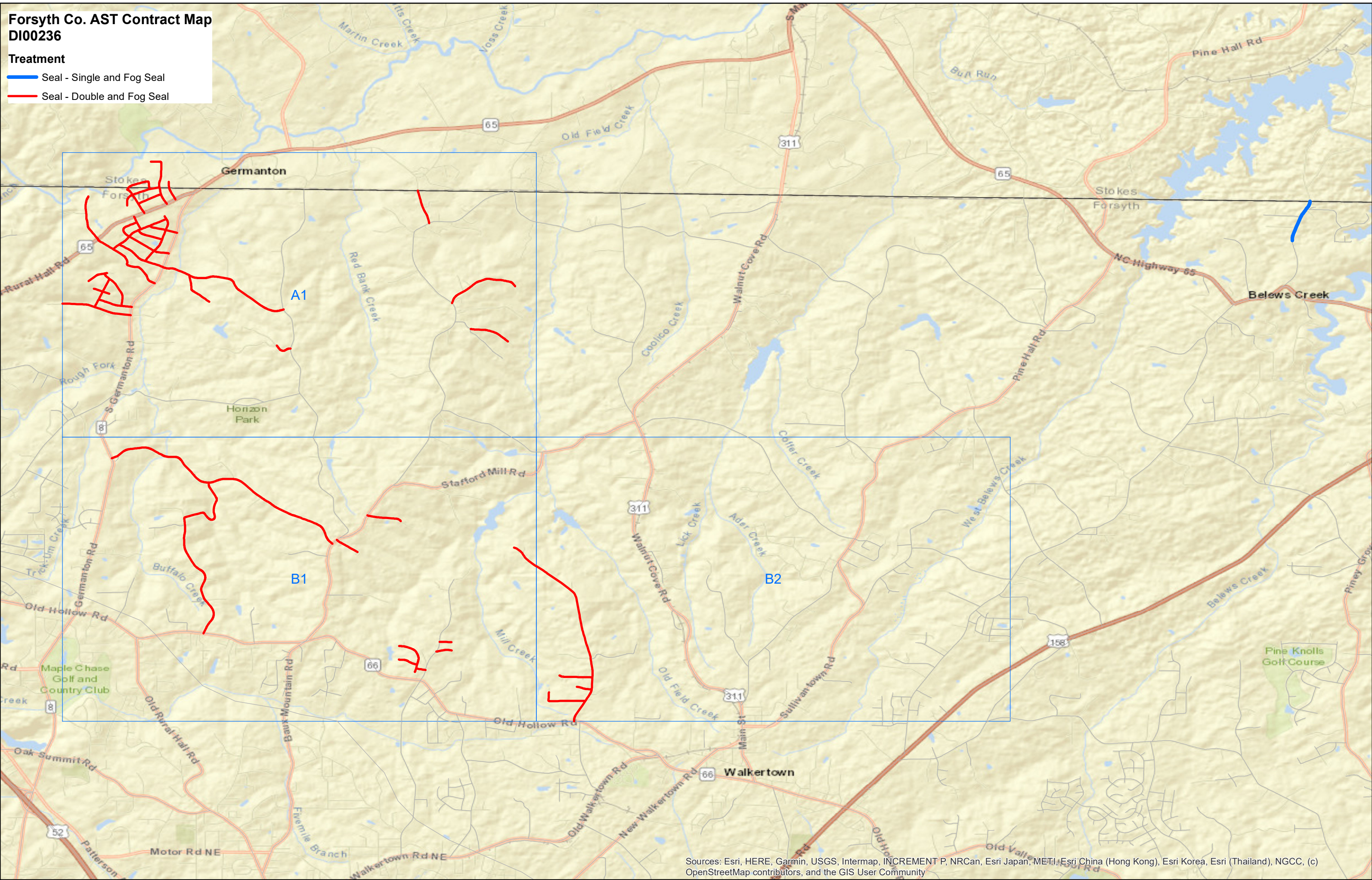




**Forsyth Co. AST Contract Map  
DI00236**

**Treatment**

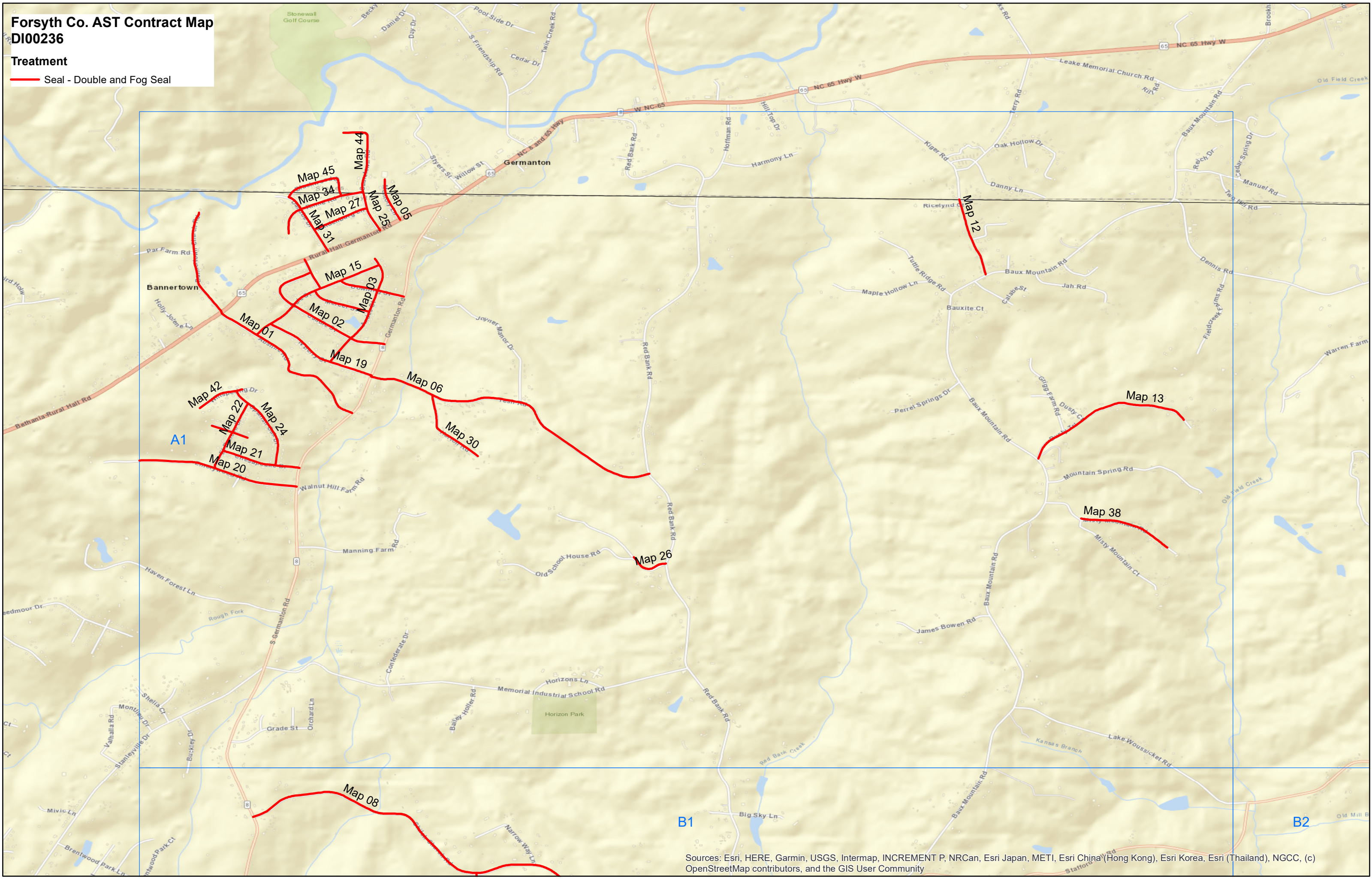
- Seal - Single and Fog Seal
- Seal - Double and Fog Seal





**Forsyth Co. AST Contract Map  
DI00236**

**Treatment**  
— Seal - Double and Fog Seal



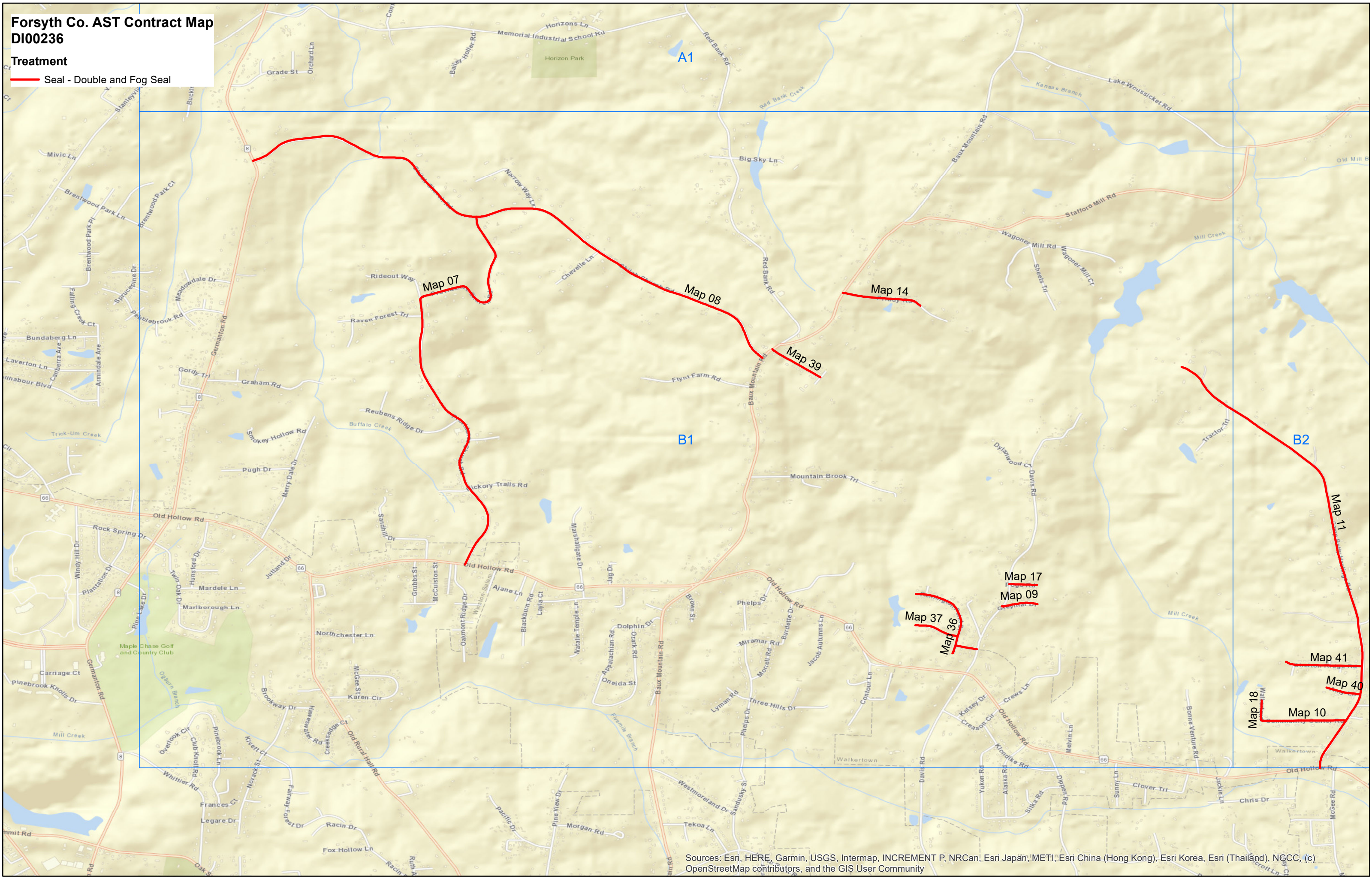
Sources: Esri, HERE, Garmin, USGS, Intermap, INCREMENT P, NRCan, Esri Japan (Hong Kong), Esri Korea, Esri (Thailand), NGCC, (c) OpenStreetMap contributors, and the GIS User Community



**Forsyth Co. AST Contract Map  
DI00236**

**Treatment**

— Seal - Double and Fog Seal



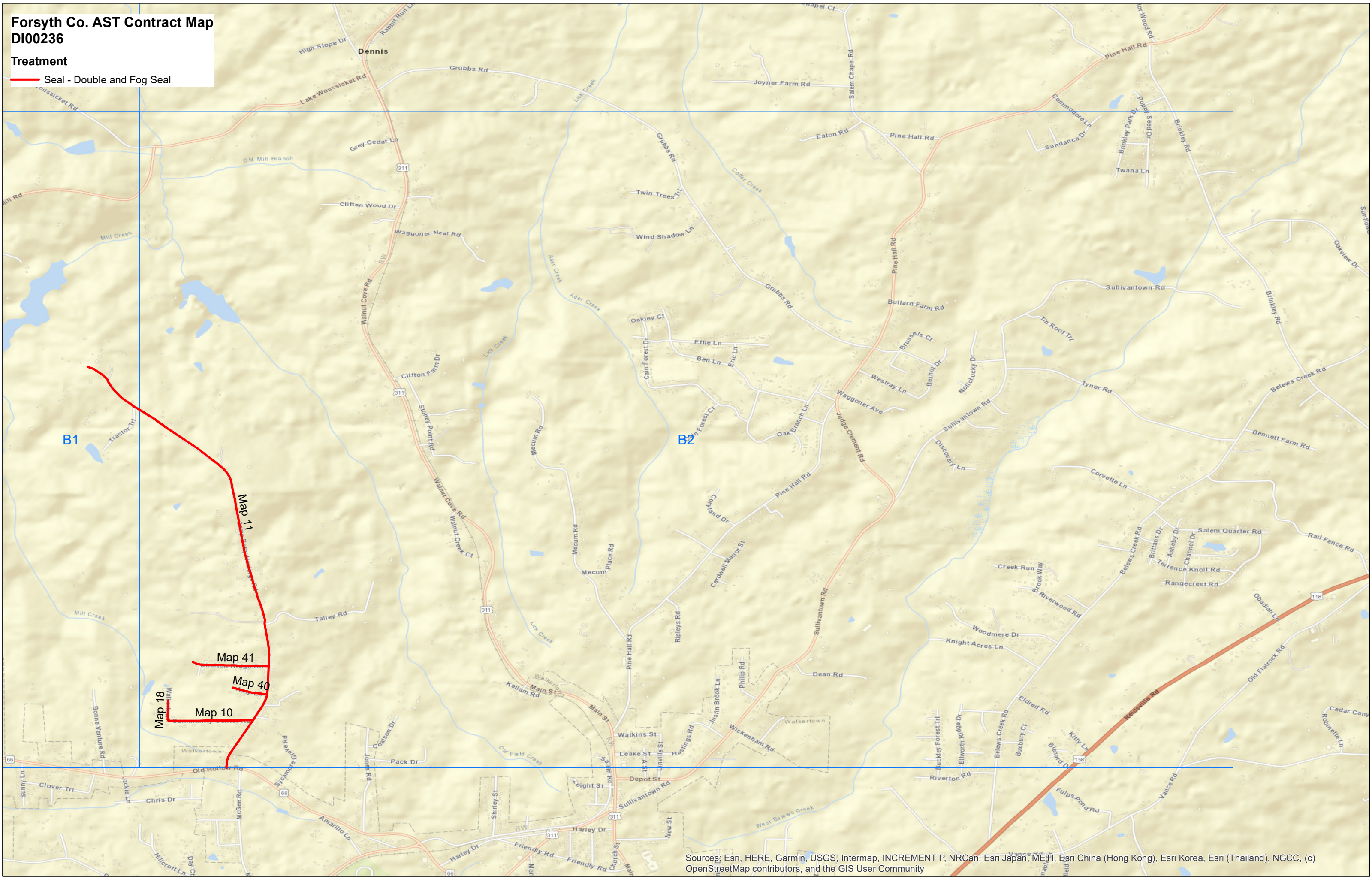
Sources: Esri, HERE, Garmin, USGS, Intermap, INCREMENT P, NRCan, Esri Japan, METI, Esri China (Hong Kong), Esri Korea, Esri (Thailand), NGCC, (c) OpenStreetMap contributors, and the GIS User Community



**Forsyth Co. AST Contract Map  
DI00236**

**Treatment**

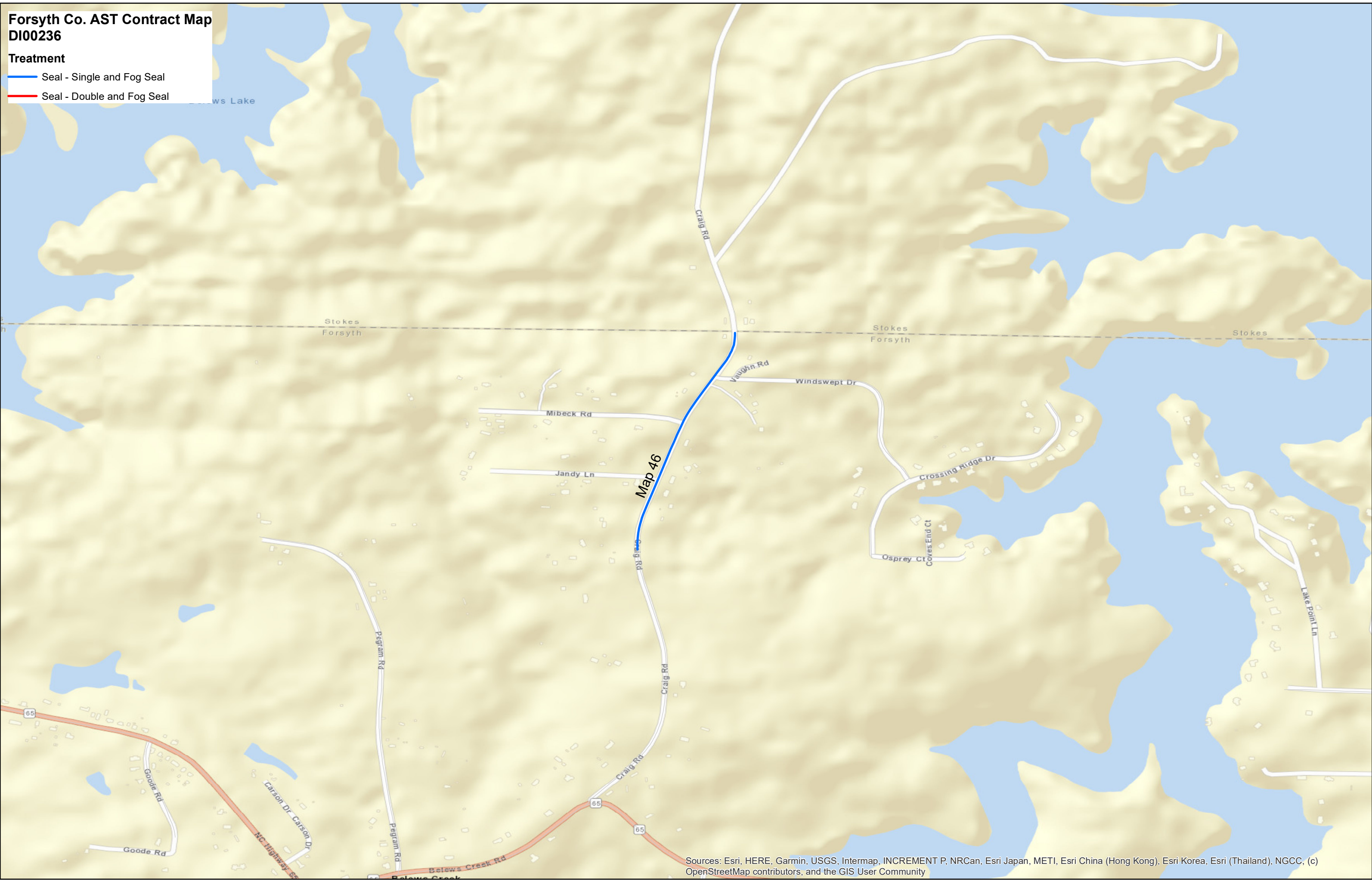
— Seal - Double and Fog Seal





**Forsyth Co. AST Contract Map  
DI00236**

- Treatment**
- Seal - Single and Fog Seal
  - Seal - Double and Fog Seal

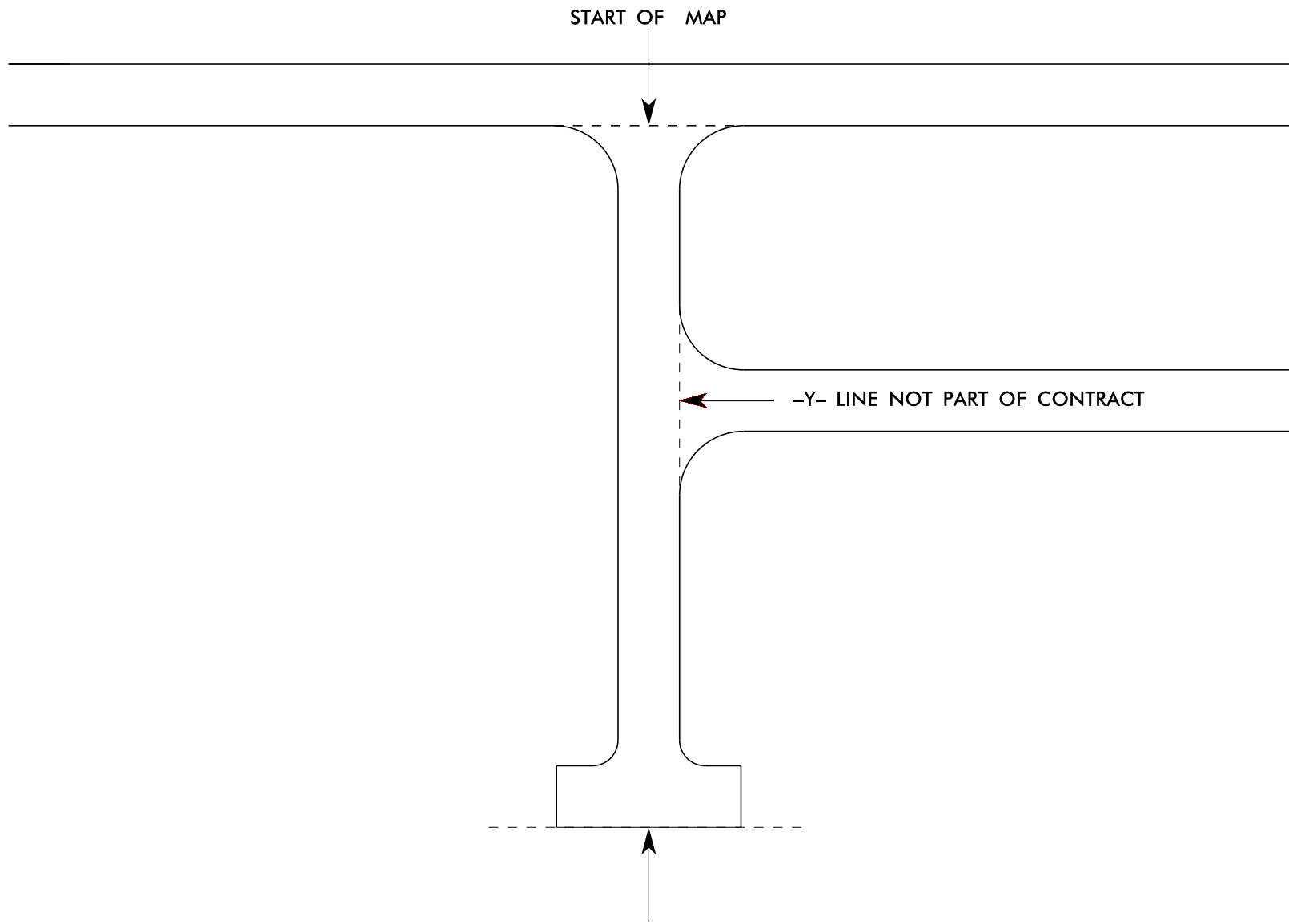


Sources: Esri, HERE, Garmin, USGS, Intermap, INCREMENT P, NRCan, Esri Japan, METI, Esri China (Hong Kong), Esri Korea, Esri (Thailand), NGCC, (c) OpenStreetMap contributors, and the GIS User Community



PROJECT REFERENCE NO.

SHEET NO.

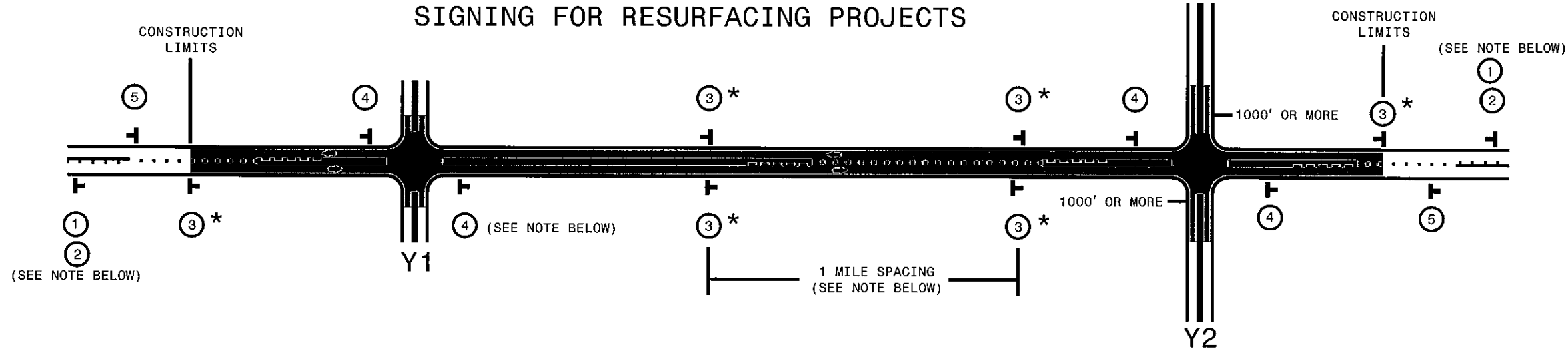


THE PROJECT PLANS DENOTE ALL ROAD TERMINUS AS END OF MAINTENANCE: THIS IS INTENDED TO DESCRIBE ANY TYPE GEOMETRY THAT MAY EXIST, INCLUDING CUL-DE-SAC, T-TURN, L-TURN, TRANSITION TO UNPAVED, TRANSITION TO PRIVATE ROAD, ETC.

Y-LINE TIE IN DETAIL
----------------------



# SIGNING FOR RESURFACING PROJECTS



LEGEND	
	PORTABLE WORK ZONE SIGN (1110.02)
	DIRECTION OF TRAFFIC FLOW

## MAINLINE (-L-) SIGNING

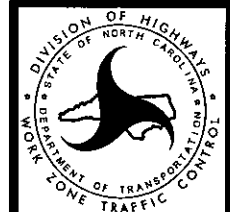
## -Y- LINE SIGNING

SIGNING NOTES AND PLACEMENT PER DIRECTION	 	<p>PLACE 1000' PRIOR TO BEGINNING OF CONSTRUCTION LIMITS. ONLY USED ON -Y- LINES IF RESURFACING LIMITS EXTEND 1000' ALONG -Y- LINE.</p> <p>#2 SIGN ONLY USED WHEN RESURFACING LIMITS ARE 2 OR MORE MILES IN LENGTH. ROUND UP TO NEXT WHOLE NUMBER. (NO FRACTIONAL OR DECIMAL NUMBERS)</p>	<p>NO REQUIRED STATIONARY SIGNING FOR THE FOLLOWING -Y- LINE CONDITIONS:</p> <ol style="list-style-type: none"> <li>LESS THAN 1000' OF RESURFACING ALONG -Y- LINE</li> <li>SUBDIVISION ROADS</li> <li>DEAD END ROADS</li> </ol> <p>WHEN PAVING/CONSTRUCTION ACTIVITIES PROCEED ACROSS AN UNSIGNED -Y- LINE, ADVANCE WARNING PORTABLE SIGNS SHALL BE USED ALONG THE -Y- LINE AS SHOWN BELOW. REMOVE UPON COMPLETION OF WORK.</p> <div style="display: flex; justify-content: space-around;"> <div style="text-align: center;">   <small>W20-1 48" X 48"</small> </div> <div style="text-align: center;">   <small>W20-7 A 48" X 48"</small> </div> </div> <p>PLACED 500' IN ADVANCE OF FLAGGER. PLACED 250' IN ADVANCE OF FLAGGER.</p>
		<p>PLACE INITIALLY AT THE CONSTRUCTION LIMITS AND SPACE 1 MILE APART THEREAFTER. IF NO -Y- LINES EXIST, PLACE 2ND SET 1/2 MILE FROM THE CONSTRUCTION LIMITS AND THEN SPACE 1 MILE THEREAFTER.</p> <p>STANDARD DRAWING 1110.01 STATIONARY WORK ZONE SIGNS</p>	
		<ul style="list-style-type: none"> <li>THESE ARE FOR -Y- LINES THAT ARE "THROUGH" ROADWAYS.</li> <li>DEAD END AND SUBDIVISION ROADS ARE NOT "THROUGH" ROADWAYS.</li> <li>INSTALL 500' +/- FROM EACH -Y- LINE APPROACH AS SHOWN ABOVE.</li> <li>FOR MULTIPLE -Y- LINES THAT ARE SEPARATED BY 0.25 MILES OR LESS, TREAT AS A SINGLE UNIT AND INSTALL WITHIN 500' OF EACH APPROACH.</li> <li>A MAXIMUM OF 2 SIGN SETS PER MILE. DO NOT INSTALL WHEN -Y- LINES ARE WITHIN 0.5 MILES FROM "END ROAD WORK" SIGN.</li> </ul>	
		<p>PLACE 500' FOLLOWING THE END OF CONSTRUCTION LIMITS OR AS SHOWN WHEN WORK ENDS AT A 3-WAY TEE INTERSECTION. (OPTIONAL)</p>	

### \* SIGNING FOR ASPHALT SURFACE3 TREATMENTS (ONLY)

SUBSTITUTE LOW/SOFT SHOULDER SIGNS BY ALTERNATING THE FOLLOWING TWO SIGNS: STARTING WITH "UNMARKED PAVEMENT AHEAD" (SP 06026) FOLLOWED BY "LOOSE GRAVEL" (W8-7)

STANDARD DRAWING 1110.01 STATIONARY WORK ZONE SIGNS



RESURFACING ADVANCE WARNING SIGNS FOR RURAL AND SUBURBAN 2 LANE ROADWAYS

SYSTEMTIME: 11/15/2001 10:00:00 AM  
 USERNAME: D:\CNC\...